

Linear High Bay Series

The OLHB2 Linear Highbay Series is a rugged LED luminaire designed specifically to meet the challenge of evenly lighting medium- to high-ceiling spaces for warehousing, storage and manufacturing facilities. The wireguard option also makes the product ideal for gymnasiums. Offered in four sizes and outputs, the OLHB2 LED Linear Highbay replaces HID sources from 175W to 1000W with low glare and wide spacing. The OLHB2 is first in class in structural integrity. It neither twists nor flexes during installation. Choose the OLHB2 with confidence knowing your installation is backed by Optec LED Lighting's 5-year warranty. Excellent optical performance is achieved with Seoul Semiconductor brand LED's and engineered discrete optics. All models come standard with 0-10V dimming and an acrylic diffusing lens. Luminaires are available with a number of mounting options, including a pendent (single mounting point) or adjustable cable mount. High quality durable gloss white paint is electrostatically applied after fabrication.



FEATURES

- For replacement of 175W-1000W HID Sources, 6-lamp T8, 8-lamp T8, 4-lamp T5HO, 6-lamp T5HO, and 8-lamp T5HO Fluorescent sources
- LED Brand: Seoul Semiconductor
- Color Temperatures: 4000K and 5000K
- CRI: 80+
- Lumen Maintenance: L70=50,000 at 45° C
- Operating Temperature Range: -40° C to 45° C
- Durable electrostatically applied paint finish
- Mounting Options: Adjustable aircraft cable or pendent mounting (Select PM Option with single stem by others)
- Damp Location Listed

ELECTRICAL SPECIFICATIONS

- Two Universal Voltage Driver Options: 120-277V and 347-480V
- Power Factor > 0.90
- THD < 0.85
- Control Options: 0-10V Dimming Standard (Occupancy Sensor Optional)

TEST & CERTIFICATIONS

- UL1598
- RoHS Compliant
- DLC Premium



WARRANTY

- 5-Year Warranty

PERFORMANCE SPECIFICATIONS

Wattage	Catalog Number	Lumens	
		4000K	5000K
110W	OLHB2-110	13,521	14,410
160W	OLHB2-160	20,369	21,222
220W	OLHB2-220	26,986	29,213
320W	OLHB2-320	39,946	42,051

TRADITIONAL SOURCE COMPARISON DATA

Wattage	Catalog Number	6-LAMP T8	8-LAMP T8	6-LAMP T5HO	8-LAMP T5HO	175W HID	250W HID	320W HID	400W+ HID
110W	OLHB2-110	X				X			
160W	OLHB2-160		X	X			X		
220W	OLHB2-220				X			X	
320W	OLHB2-320								X



Linear High Bay Series

ORDERING INFORMATION

EXAMPLE: OLHB2-160-UNV-50-M-PM-WH-OS-WG-CS12

SERIES	WATTAGE	VOLTAGE	COLOR TEMP	DISTRIBUTION	MOUNT	FINISH	CONTROL / OPTIONS
OLHB2 = Optec LED Linear High Bay	110 = 110W 160 = 160W 220 = 220W 320 = 320W	UNV = 120-277V UNVH = 347-480V	40 = 4000K 50 = 5000K	M = Medium	PM = Pendant Mount Kit ¹ AC = Adjustable Cable Kit ²	WH = White	OS = Occupancy Sensor ³ WG = Wire Guard CS12 = 120V Cord Set (15 Amp) ⁴ CS28 = 208V Cord Set (15 Amp) ⁴ CS22 = 220V Cord Set (15 Amp) ⁴ CS34 = 347V Cord Set (20 Amp) ⁴ CS48 = 480V Cord Set (20 Amp) ⁴

¹ Accepts 3/4" Diameter Stem
- See OL-PMB Sheet for Details on Pendant Mount Bracket
- Stems, Receptacles & Swivel Plates by Others

² 10' "M" Cable Kit with Hook Ends

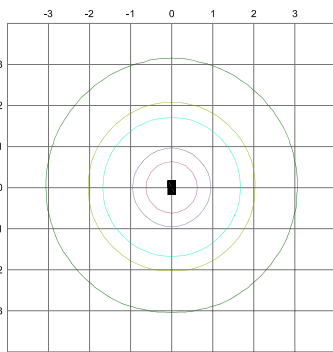
³ See OL-HBOS Sheet for Details on High Bay Occupancy Sensor

⁴ 6' Cord (White) with NEMA Twist Lock Plug

PHOTOMETRIC PERFORMANCE

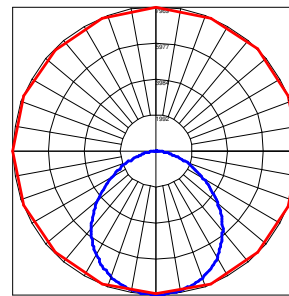
LEGEND

0.1 fc
0.5 fc
1.0 fc
5.0 fc
10.0 fc



OLHB2-320-5000K-277V at 20' mounting height

POLAR CANDELA PLOT



OLHB2-160-5000K-277V

Maximum candela = 7979
Located at Horizontal Angle = 0,
Vertical Angle = 0

LEGEND

Horizontal Cone Through Vertical Angle (0) (Through Max Candela)
Vertical Plane Through Horizontal Angles (0-180) (Through Max Candela)

DIMENSIONS, WEIGHTS & MOUNTING

Wattage	110W	160W	220W	320W
Length (inches / mm)	23.82 / 605	23.82 / 605	45.91 / 1166	45.91 / 1166
Width (inches / mm)	12.60 / 320	17.32 / 440	12.60 / 320	22.05 / 560
Height (inches / mm)	3.62 / 92	3.62 / 92	3.62 / 92	3.94 / 100
Weight (lbs / kg)	10.14 / 4.6	12.57 / 5.7	17.86 / 8.1	21.16 / 9.6
Shipping Weight (lbs / kg)	11.68 / 5.3	14.77 / 6.7	20.28 / 9.2	24.0 / 10.9

